

VINYL

12inch gatefold sleeve with 4mm spine, left sleeve closed

12" GATEFOLD

CLOSED FORMAT

315 X 310 MM

OPEN FORMAT

659 X 644,2 MM

DELIVERY SPECIFICATIONS

PDF (pdf/x-4:2010 or ISO Coated V2)

300 DPI Resolution

CMYK

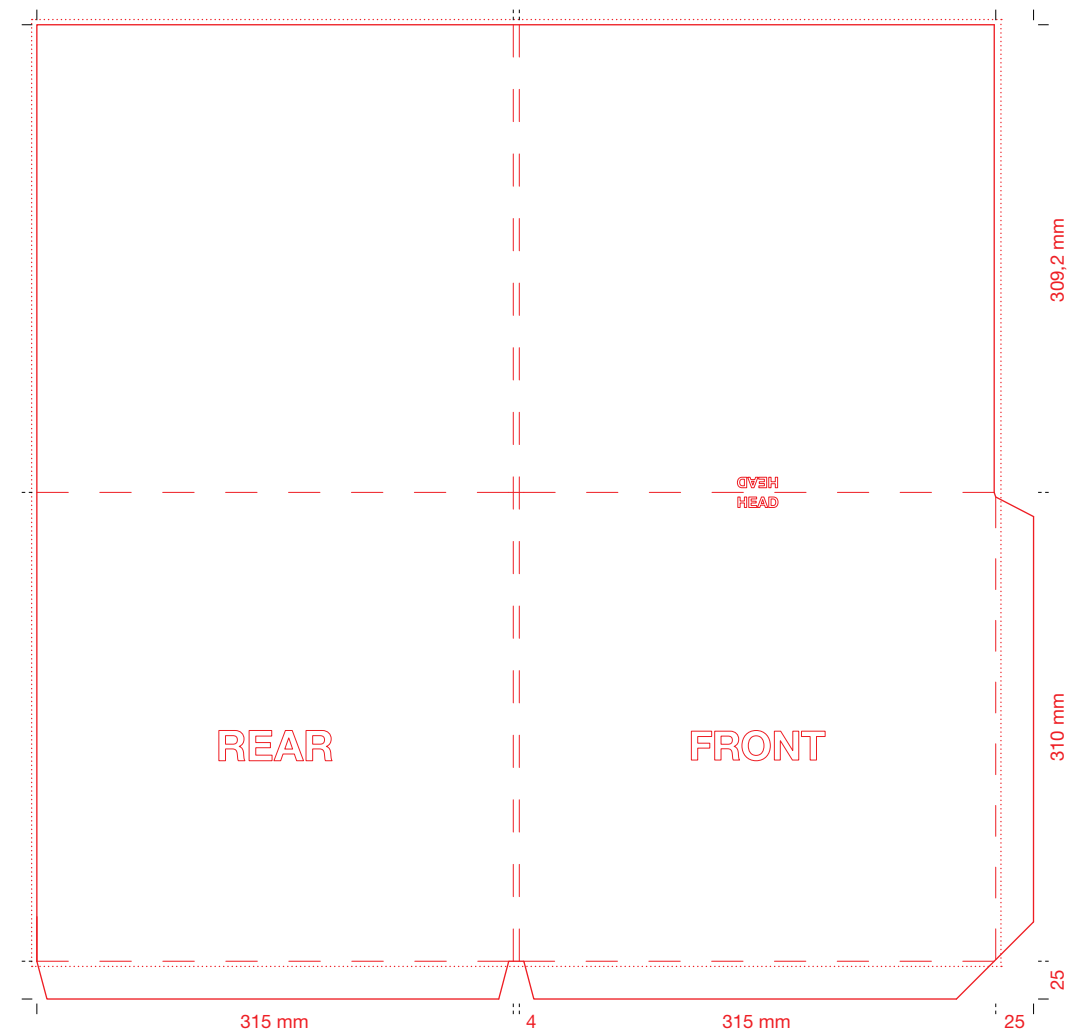
(RGB will be converted)

3 MM bleed margin (dotted line)

Keep important information (text, logo's , etc.) at least 2 mm from the cutting edge to prevent loss.

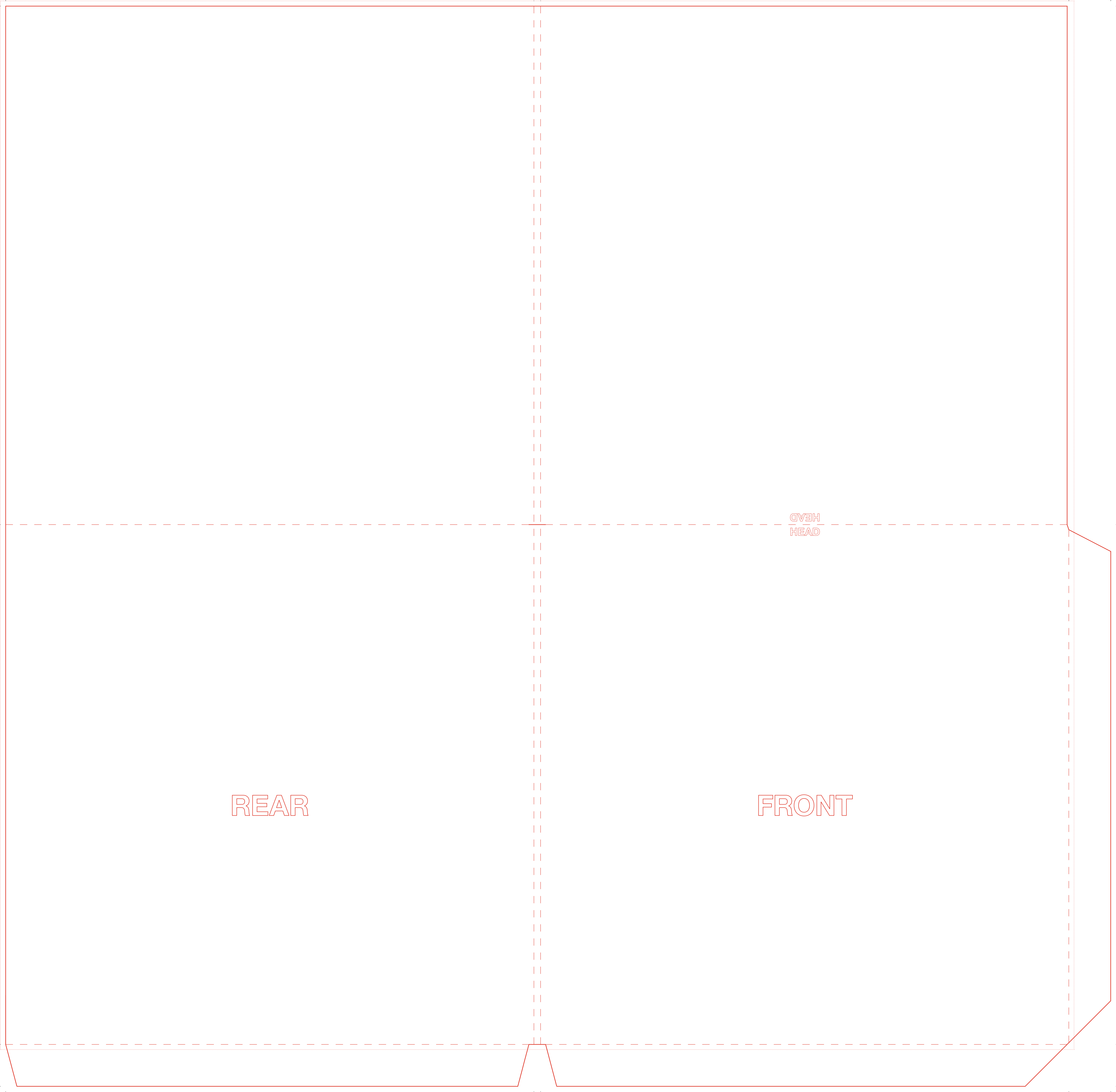
Use the attached* or seperate delivered template files for layout (.idml for InDesign or .pdf, suitable for other design applications).

* Attached files accessible with Acrobat only.



This preview is not suited for design purposes! Use the attached or seperate delivered templates files.

SPECIFICATIONS



REAR

FRONT

OVERHEAD

HEAD

315 mm

25 mm

315 mm

25 mm

309.2 mm

310 mm